

## Secure Browser Download Process

1. Click the below Link.

<https://tinyurl.com/247b99z7>



**THE INSTITUTE OF  
Company Secretaries of India**  
IN PURSUIT OF PROFESSIONAL EXCELLENCE  
Statutory body under an Act of Parliament

### ICSI CSEET JAN 2026 SEB DOWNLOAD

Unique Id Number

DOB




Captcha



**LOG IN**

2. Enter the CSEET Registration Number and DOB and Click on LOG IN Button




**THE INSTITUTE OF  
Company Secretaries of India**  
IN PURSUIT OF PROFESSIONAL EXCELLENCE  
Statutory body under an Act of Parliament


Welcome! MEET AMITKUMAR RAJPUT

**LOGOUT**

## Downloads

Click on the below links to download your SEB files

Download Secure Examination Browser (SEB)

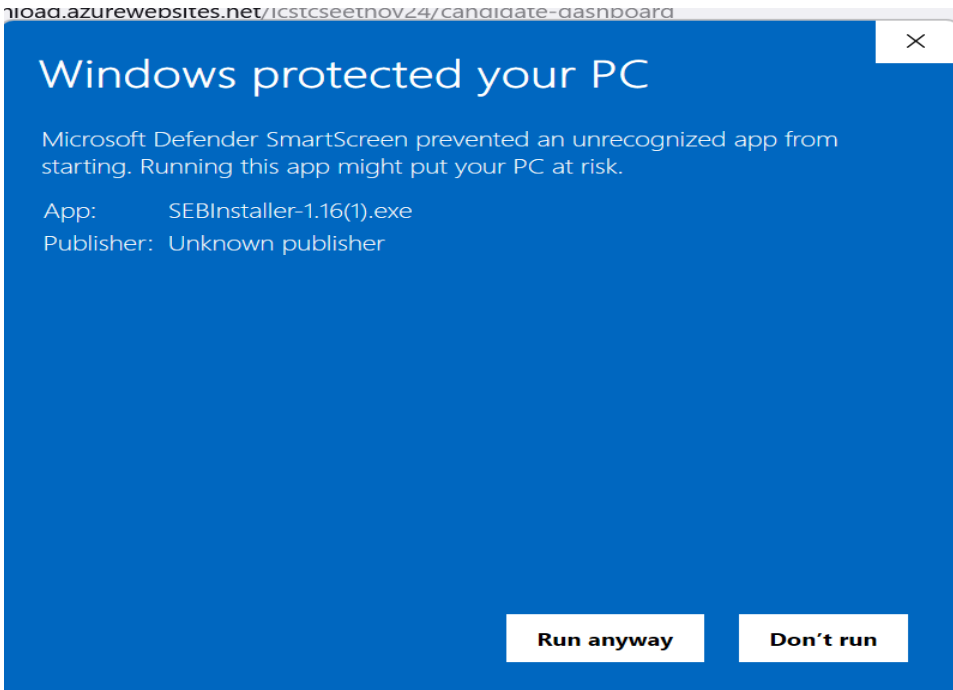
Download System Requirement file

3. Click on Download Secure Examination Browser (SEB).

NOTE: Remove pop up blocker before starting download and Installation of **Safe Exam Browser**

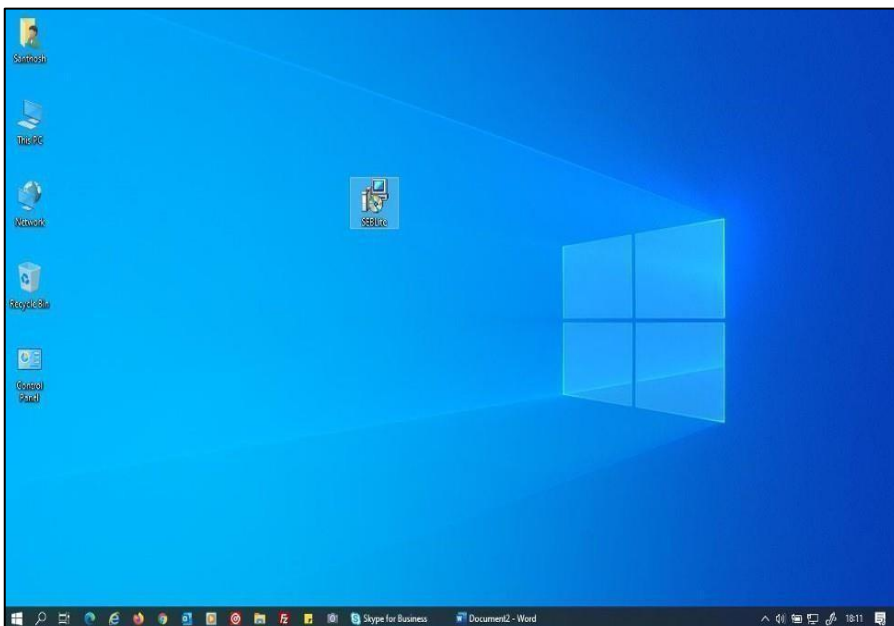
### Step 1: Download

Click to download the Download Secure Examination Browser (SEB) onto your Computer from the above form or from the link provided to you in your email and SMS. Click on Run anyway.



- ☐ During download, the anti-virus in your system may prompt you to re-confirm download, as it is an exe file.
- ☐ Do NOT worry, it is very safe to download and the run the exe file.
- ☐ This exe file is needed only for the exam and not for anything else.
- ☐ On completion of the exam, you may go the Control Panel and uninstall the same.

**Step 2: Installation - Double click on “ICSI\_SEBInstaller-1.21.exe” to start the installation.**

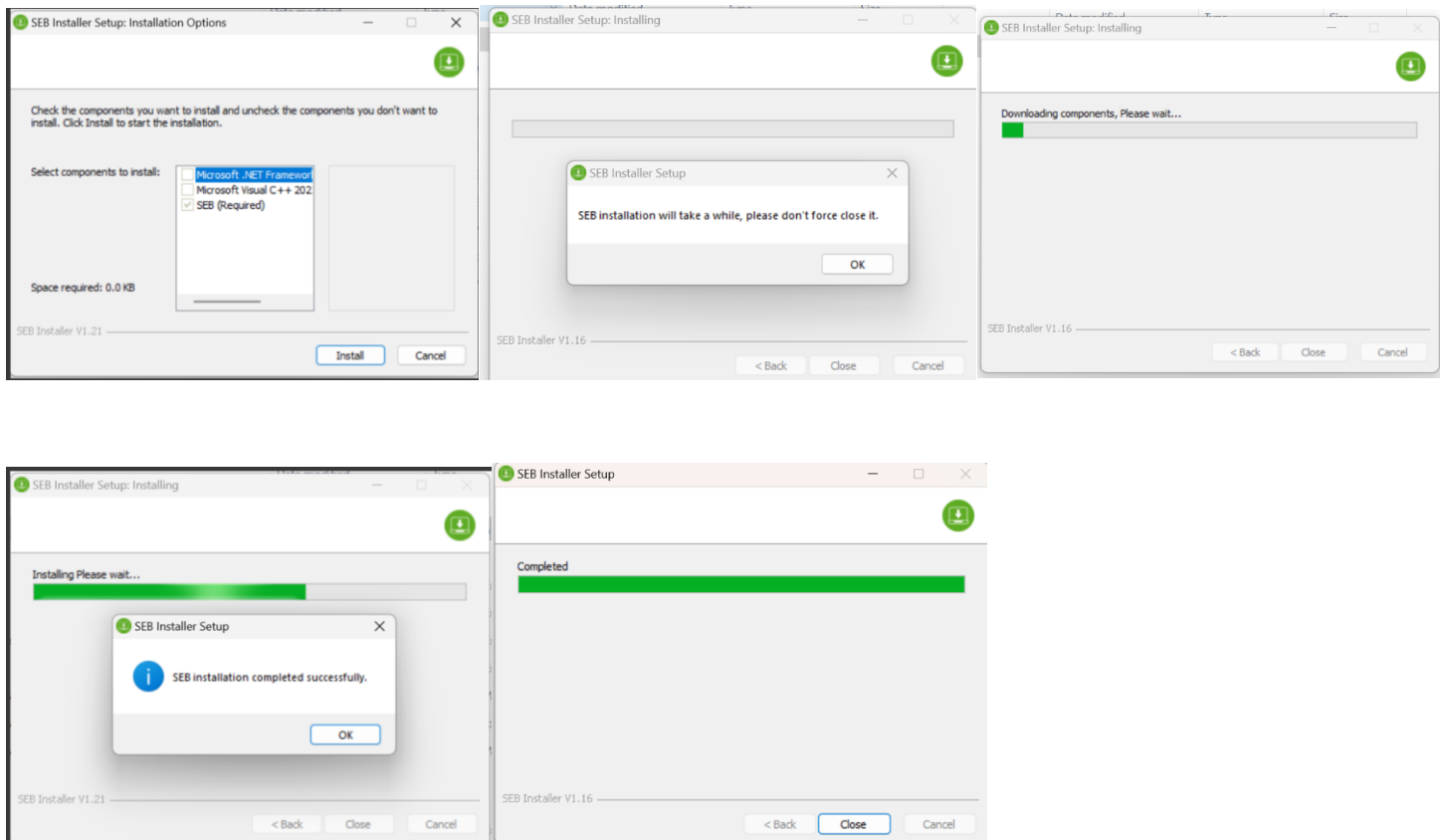


- ☐ You will get the following pop-up window that will say “Windows protected your PC”
- ☐ Click on “**More Info**” to know more about
- ☐ Click on “**Run Anyway**” to initiate the installation process.



- ☐ Click on “**Next >**” to continue
- ☐ Click on “**Close**” to complete the Setup

**Important : Internet Connection should be stable.**



### Step 3: RUN Time

You will be able see two shortcut icons on desktop

- ☐ **SEB**
- ☐ **SEB Repair tool**

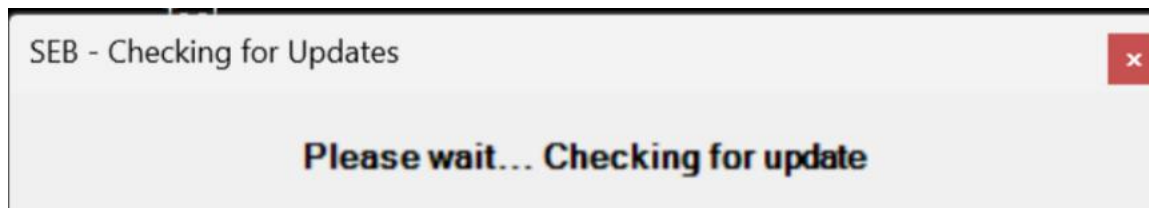
Please double click on “**SEB**” shortcut Icon.



Based on your Windows settings you may / may not get the below mentioned popup message. Click “Yes” to continue.

Note : Please do not uninstall SEB until your examination is completed.

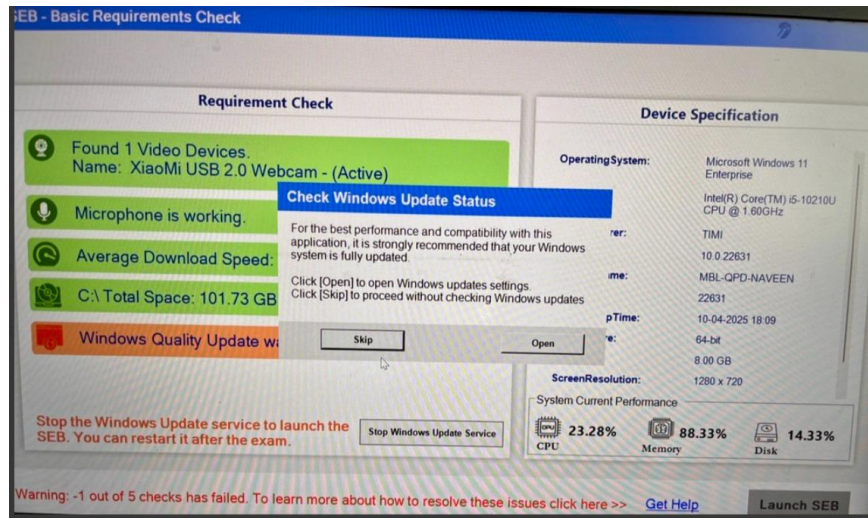
Once Clicked on “**SEB**” Icon.



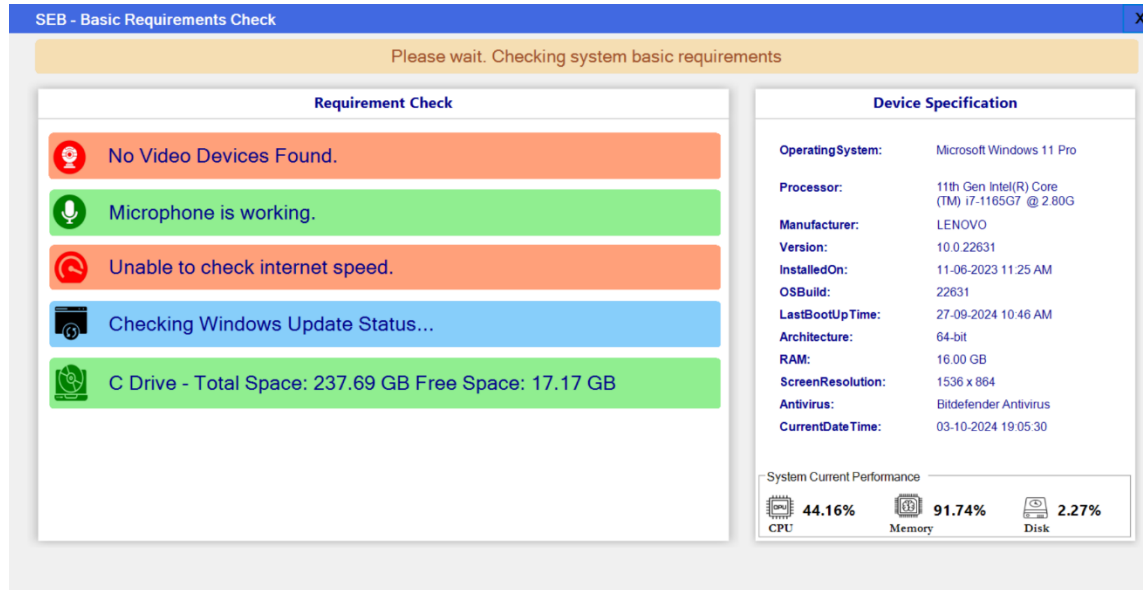
**From the above, SEB is checking for any update from Server.**

#### **Important Note:**

- **Please ensure that Camera and Microphone to be worked properly to launch the SEB.**
- **Internet connection should be stable.**



We can skip or update the windows from the above image.



Please ensure that all of the above requirements are met to Launch the SEB

SEB - Basic Requirements Check

Requirement Check

Found 1 Video Devices.  
Name: Integrated Camera - (Active)

Microphone is working.

Average Download Speed: 21.25 MB/s

No Pending Windows Updates.

C:\ Total Space: 200.82 GB | Free Space: 85.71 GB

Stop the Windows Update service to launch the SEB. You can restart it after the exam.

Stop Windows Update Service

Device Specification

OperatingSystem: Microsoft Windows 11 Enterprise

Processor: 11th Gen Intel(R) Core(TM) i7-1165G7 @ 2.80GHz

Manufacturer: LENOVO

Version: 10.0.22631

MachineName: MBL-ASS-VINAYJ

OSBuild: 22631

LastBootUpTime: 26-10-2024 10:37

Architecture: 64-bit

RAM: 16.00 GB

ScreenResolution: 1280 x 720

System Current Performance

CPU 34.42%

Memory 64.27%

Disk 1.97%

All the requirements have been successfully met! You are ready to proceed.

Launch SEB

Clicked on “Stop Windows Update Service”, to enable the “Launch SEB”.

SEB - Basic Requirements Check

Requirement Check

Found 1 Video Devices.  
Name: Integrated Camera - (Active)

Microphone is working.

Average Download Speed: 21.25 MB/s

No Pending Windows Updates.

C:\ Total Space: 200.82 GB | Free Space: 85.71 GB

Stop the Windows Update service to launch the SEB. You can restart it after the exam.

Disable

Device Specification

OperatingSystem: Microsoft Windows 11 Enterprise

Processor: 11th Gen Intel(R) Core(TM) i7-1165G7 @ 2.80GHz

Manufacturer: LENOVO

Version: 10.0.22631

MachineName: MBL-ASS-VINAYJ

OSBuild: 22631

LastBootUpTime: 26-10-2024 10:37

Architecture: 64-bit

RAM: 16.00 GB

ScreenResolution: 1280 x 720

System Current Performance

CPU 34.42%

Memory 64.27%

Disk 1.97%

All the requirements have been successfully met! You are ready to proceed.

Launch SEB

SEB - Basic Requirements Check

Requirement Check

Found 1 Video Devices.  
Name: Integrated Camera - (Active)

Microphone is working.

Average Download Speed: 21.25 MB/s

No Pending Windows Updates.

C:\ Total Space: 200.82 GB | Free Space: 85.71 GB

Stop the Windows Update service to launch the SEB. You can restart it after the exam.

Stopped

Device Specification

OperatingSystem:

Microsoft Windows 11 Enterprise

Processor:

11th Gen Intel(R) Core(TM) i7-1185G7 @ 2.80GHz

Manufacturer:

LENOVO

Version:

10.0.22631

MachineName:

MBL-ASS-VINAYJ

OSBuild:

22631

LastBootUpTime:

26-10-2024 10:37

Architecture:

64-bit

RAM:

16.00 GB

ScreenResolution:

1280 x 720

System Current Performance

CPU

34.42%

Memory

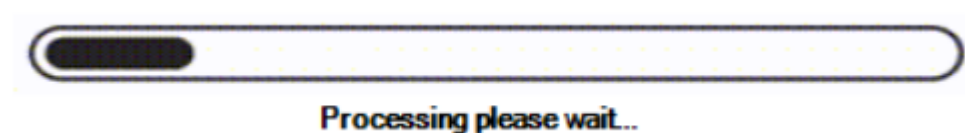
64.27%

Disk

1.97%

All the requirements have been successfully met! You are ready to proceed.

Launch SEB



Running Applications

The following applications should be closed before launching the SEB:

ProcessName	Process Type
Adobe Photoshop	Applications
DataCardMonitor MFC Applic...	Applications
Firefox	Applications
Google Chrome	Applications
Internet Explorer	Applications
makensisw	Applications
Microsoft OneNote	Applications
Microsoft Outlook	Applications
Microsoft PowerPoint	Applications

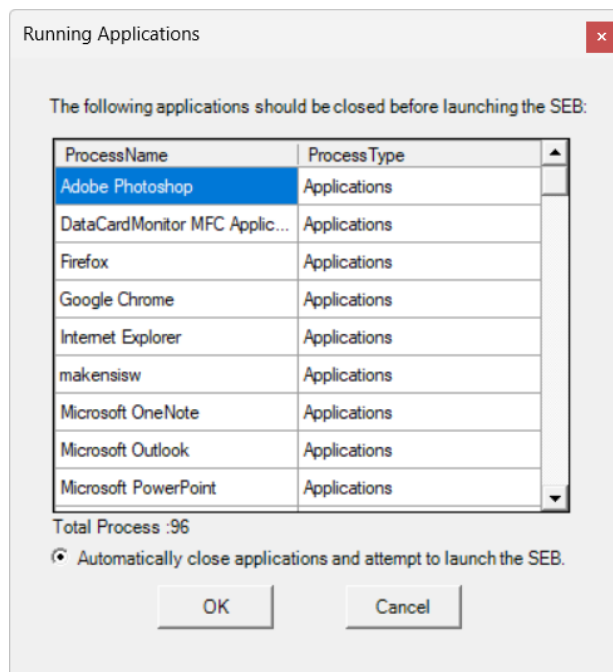
Total Process :96

☐ Automatically close applications and attempt to launch the SEB.

OK

Cancel

Apps will close forcefully, once clicked on "OK"



## Enter Login Credentials, Confirm Attendance and Sign In

Password will be alphanumeric and this will be sent via SMS or email to all the candidates.

**122.167.127.220**

Login ID: AA05YOB6

Password: .....

☒ I confirm my attendance by logging in

Sign in Register