

# PRESENTED BY

**NAME – DEVIKA GHOSH**

**REGISTRATION NUMBER –  
150577345/11/2018**

**STAGE – EXECUTIVE PROGRAMME**

**PLACE – JAMSHEDPUR, JHARKHAND**

**CHAPTER - JAMSHEDPUR**



# TOPIC- CHALLENGES FACED BY COMPANY SECRETARIES DURING CORONAVIRUS AND LOCKDOWN PERIOD.

Be **INFORMED**

Be **PREPARED**

Be **SMART**

Be **SAFE**

Be **READY** to fight

**#COVID19**



- **All are facing the pandemic or crisis. And it is also very much challenging for Companies Secretaries in ways that are unprecedented in modern times.**
- **“We are in this together – and we will get through this together.”**

# CHALLENGES FOR COMPANY SECRETARIES

## ❖ POOR NETWORK CONNECTIVITY

Due to an unprecedented surge in online traffic, which includes online office works, classes, interaction with students from video-conferencing platforms, most Company Secretaries are facing poor network issues, which often makes online meets incomprehensible.



## ❖ FAMILY AND WORK CONFLICT WHEN WORKING AT HOME

Managing work and family can be difficult in lockdown when it is working from home for Company Secretaries. They are unable to work as office environment as they used to do before. Many of them are struggling to defuse some of the tensions that built up in the situation.



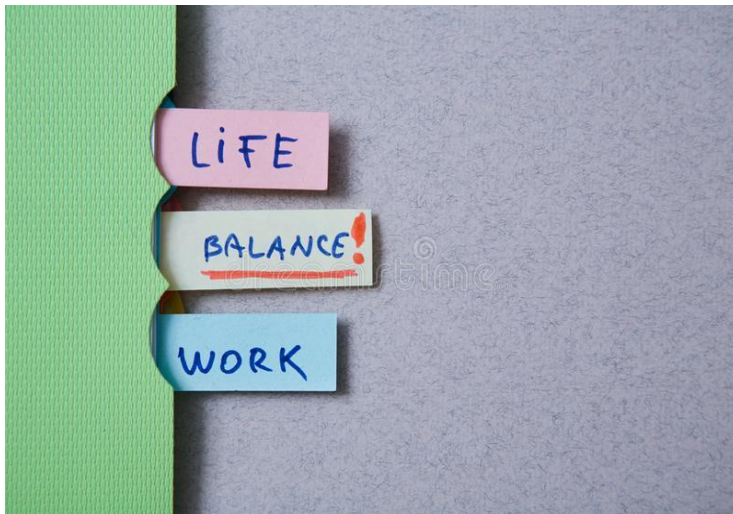
## ❖ TECHNICAL PROBLEM DURING WEBINAR OR ONLINE INTERACTIONS



They do not have office administrator to fix the system or internet connection when they are working from home. That becomes an added responsibility. Online conferencing tools are not always reliable and can often leave them frustrated in the webinar or meetings.

## ❖ WORK – LIFE BALANCE

Work life balance during the lockdown period is viewed as a stressor for Company Secretaries. Defined as an irreconcilable pressure from the work and home spheres. These can be assume as time – pressures, strain – pressures and behavior – based pressures. This can increase anxiety levels, stress level and less life satisfaction.



## ❖ MAINTAIN GOOD WORKING RELATIONSHIP WITH OTHER MEMBERS



- ❖ While working from home it is very much challenging to maintain good working relationship with other members. Working from office is totally different from working from home. It develops a working pressure to manage everything at home.

# CONCLUSION

- ❖ Humans are intensely social creatures. All need company and social contact. But for being at home for such a long period with a small group of people can become frustrating. As Company Secretaries are also facing many problems from work, family and life point of view also. As their working environment been totally changed during this COVID-19 and lockdown period.

